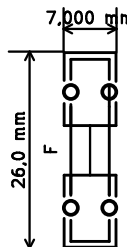
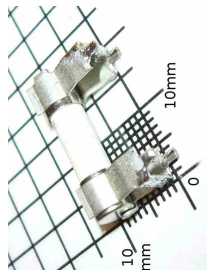
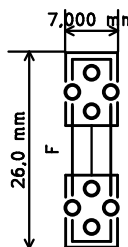


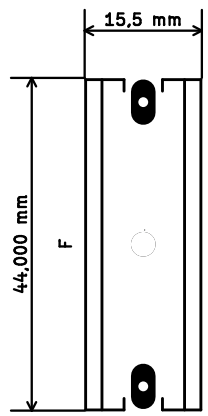
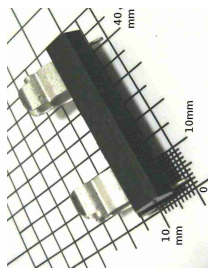
Fuseholder5x20\_horiz\_open Inline\_Type-I\_RevC\_Date24Feb2011



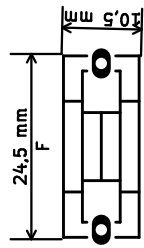
Fuseholder5x20\_horiz\_open\_latera\_Type-II\_RevC\_Date24Feb2011



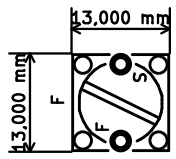
Fuseholder5x20\_horiz\_open\_universal\_Type-III\_RevC\_Date24Feb2011



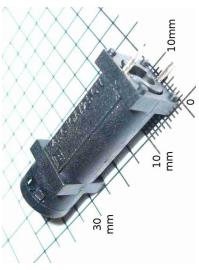
Fuseholder6x32\_Horizonta\_Open\_Schurter0031-8002\_RevB\_Date05Jul2010



Fuseholder5x20\_horiz\_SemiClosed\_Casing10x25mm\_RevA\_Date25Jul2010



Fuseholder5x20\_vert\_closed\_Bulgin\_FX0456\_RevB\_Date05Jul2010



CHECK PRINT DIMENSIONS  
WITH GAUGES!



Footprints from the file  
Fuseholder\_ThroughHole\_RevD.mod, 24 Feb 2011



**GNU  
GPL**

Author Bernd Wiebus  
NO WARRANTY!

File: Fuseholder\_ThroughHole\_RevD.brd  
Sheet: 1/1

<b>Title:</b>	
<b>Size:</b>	A4
<b>Date:</b>	26 feb 2011
<b>KiCad E.D.A. pcbnew (2011-01-25 BZR 2758) -stable</b>	
<b>Rev:</b>	Id: 1/1